

Dedicated to Professor Joseph Schwartz
Oberlin Conservatory of Music
Sung by The Oberlin College Choir, Hugh Floyd, Director

Abide with Me

For SATB div. a cappella

Performance Time: Approx. 3:30

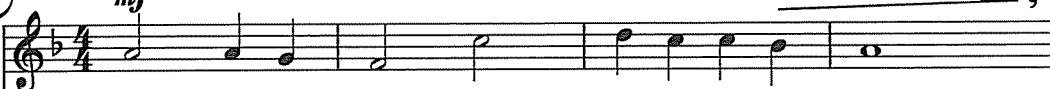
Arranged by
MOSES HOGAN

Words by HENRY F. LYTE, 1847
Music by WILLIAM H. MONK, 1861

Freely, with feeling ($\text{♩} = \text{ca. } 64$)

mf

Soprano



A - bide with me, fast falls the e - ven - tide;

mf

Alto



A - bide with me, fast falls the e - ven - tide;

mf

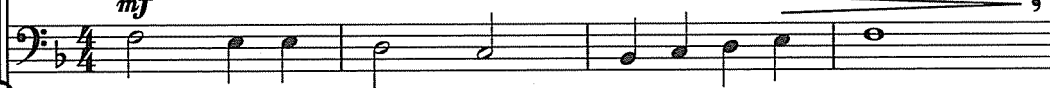
Tenor



A - bide with me, fast falls the e - ven - tide;

mf

Bass



A - bide with me, fast falls the e - ven - tide;

Freely, with feeling ($\text{♩} = \text{ca. } 64$)

mf

Piano

(for rehearsal only)



DO NOT
PHOTOCOPY



mf

The dark - ness deep - ens, Lord, with me a - bide;

mf

The dark - ness deep - ens, Lord, with me a - bide;

mf

The dark - ness deep - ens, Lord, with me a - bide;

mf

The dark - ness deep - ens, Lord, with me a - bide;

9 *mp* *mf*

When oth - er help - ers fail and com-forts flee,

mp *mf*

When oth - er help - ers fail and com-forts flee,

mp *mf*

When oth - er help - ers fail and com-forts flee,

mp *mf*

fail

9

When oth - er help - ers fail and com-forts flee,

mf

Help of the help-less, O a - bide with me.

mf

Help of the help-less, O a - bide with me.

sfp *mf*

Help of the help-less, O a - bide with me.

sfp *mf*

Help of the help-less, O a - bide with me.

17

mf

I need Thy pres - ence ev - 'ry pass - ing hour.

mf

I need Thy pres - ence ev - 'ry pass - ing hour.

mf

I need Thy pres - ence ev - 'ry pass - ing hour.

mf

I need Thy pres - ence ev - 'ry pass - ing hour.

17

mf What but Thy - grace can foil the tempt - er's pow'r?

mf What - but Thy grace can foil the tempt - er's pow'r?

mf What but - Thy grace can foil the tempt - er's pow'r?

mf What but Thy grace can foil the tempt - er's pow'r?

What but Thy grace can foil the tempt - er's pow'r?

What but Thy grace can foil the tempt - er's pow'r?

21

[25] *mp* Who, like Thy - self, my guide and stay can be?

mp Who, like Thy - self, my guide and stay can be?

mp Who, like Thy - self, my guide and stay can be?

mp Who, like Thy - self, my my guide and stay can be?

[25] Who, like Thy - self, my, my guide and stay can be?

25

mf
Through cloud and sun-shine, O a - bide with me.

mf
Through cloud and sun-shine, O a - bide with me.

sfp *mf*
Through cloud and sun-shine, O a - bide with me.

sfp *mf*
Through cloud and sun-shine, O a - bide with me.

29

33 *mf*
O Thou who chang-est not, a - bide with me.

mf
O Thou who chang-est not, a - bide with me.

sfp *mf*
O Thou who chang-est not, a - bide with me.

sfp *mf*
O Thou who chang-est not, a - bide with me.

33

37 *mf* , < *sfp* *poco accel.* *p* 40 Slower , *mp* 7

In life, in death, O Lord, a - bide with me. A -

mf , < *sfp* *poco accel.* *p*

In life, in death, O Lord, a - bide with me.

sfp *mf* , < *sfp* *poco accel.* *p* *mp* < *sfp*

In life, in death, O Lord, a - bide with A - men,*

sfp *mf* , < *sfp* *poco accel.* *p* *mp* < *sfp*

37 40 Slower

In life, in death, O Lord, a - bide with A - men,*

poco accel. *mp*

9 *poco a poco rall.*

- men,* a - men, a - men.

mp *poco a poco rall.*

A - men,* a - men, a - men.

mp *poco a poco rall.*

a - men, a - men, a - men.

mp *poco a poco rall.*

a - men, a - men, a - men.

poco a poco rall.

* Close N of each a-me(n) to hum through ending.